



The High Precision Belt Planter



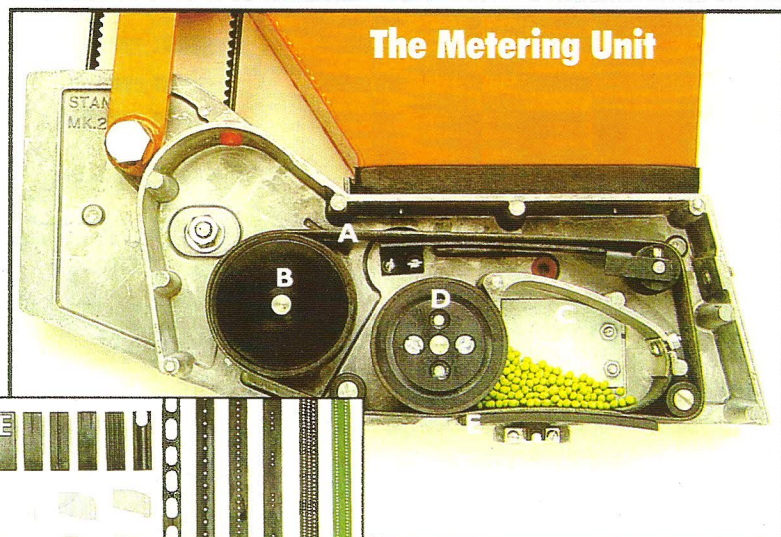
Models from 2 to 18 rows
Free floating chassis
Landwheel drive with belt and pulley transmission
Choice of rear wheels
Electronic rotation monitor option

Accurate seed spacing
Total control of plant density
Choice of planting patterns
Kind on seeds
Low maintenance costs
Coulters for all soil types

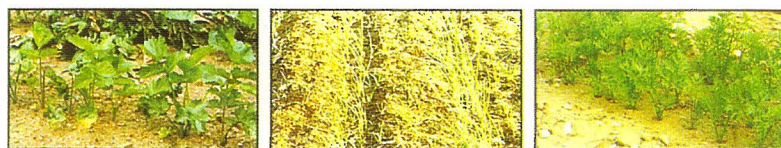
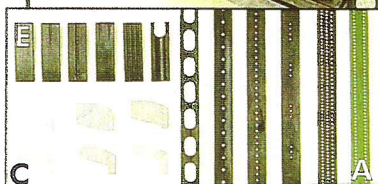
Stanhay seed drills are renowned for their low seed drop and remarkable versatility. They plant every seed type from flowers to sugar beet, from carrot to edible beans and, when used with pelleted seed, their accuracy is near perfect. The **870** is the ideal model for many types of operation. The adjustable height land wheels give a very positive drive to all row units, whether planting on flat or raised beds.



The 870 Row Unit



The Metering Unit



Single Line

Double Line

Triple Line

How It Works!

The principle of operation is clever yet very simple:

- The seedbelt (A) is rotated clockwise by the drive wheel (B)
- The choke (C) controls the seed entering the chamber
- The repeller wheel (D) agitates the seed and repels doubles
- The base (E) is plain or grooved to suit the size of seed
- Seed is released as each hole in the seedbelt reaches the end of the base

By fitting the right combination of choke, base and seedbelt (ribbed, plain or plastic) punched with the correct size and number of holes - in single, double or triple lines - you can plant almost any size of seed at any spacing or drilling pattern.

870 - The High Precision Belt Planter

Stanhay drills give outstanding results with all pelleted and coated seeds, and will handle many natural seeds too. Here are just some of the seeds you can plant:

Asparagus	Lettuce
Beans	Mustard
Broccoli	Onions
Brussels	Paprika
Cabbage	Parsley
Calabrese	Parsnip
Cantaloupe	Peas
Carrot	Pepper
Cauliflower	Radish
Celery	Red Beet
Chicory	Spinach
Coriander	Sugar Beet
Courgette	Swede
Cucumber	Sweetcorn
Flowers	Tobacco
Fodder Beet	Tomato
Herbs	Turnip
Kale	Wallflower
Leek	Watermelon

*Drilling
Precisely!*



Electronic Rotation Monitor

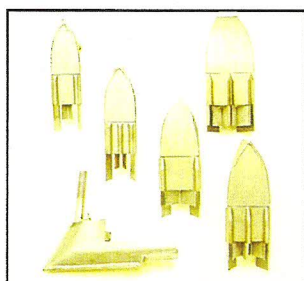
Warns if any metering unit stops turning.

Stanhay's Wide Range of Coulters lets you plant in specific patterns and densities to manipulate the size and shape of your crop. You can choose from:

Single line - all steel or with hard wearing ceramic tip.

Double line - 50mm/2" or 75mm/3" wide.

Triple line - 50mm/2", 75mm/3" or 100mm/4" wide.



SPECIFICATIONS	Stanhay 870	Robin 840
Minimum row width	205mm/8"	205/8"
- with RH land wheel between row units	500mm/20"	
- with LH land wheel between row units	555mm/22"	
Maximum planting depth	50mm/2"	50mm/2"
Markers	Manual	Manual

The **Stanhay 870 Land Drive Wheel** has a belt and pulley drive system, giving you a choice of 4 different seed spacings per seedbelt. A 7-spacing pulley drive system is optional. Wheels adjust easily for seed spacing and also for height, enabling you to plant your crops on flat or raised seedbeds up to 30cm/12" high.



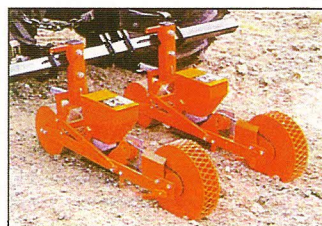
The **Stanhay 870** can be fitted with **Row Unit Wheels** of your choice to suit your conditions. The front wheel is stainless steel only, whilst the rear wheel can be either split stainless steel or cage.

870



The unique **MICROBAND** applicator allows granules of different densities to be precisely, economically and safely applied.

The **Robin 840** is the version for growers seeding small areas. It is adapted for mounting behind compact and small tractors and each unit is independently driven by its own rear wheels.



Simple, floating linkage chassis

Belt driven by rear cage wheels

Interchangeable pulleys give 4 spacings per seedbelt

Tractor hitch kit adjusts to suit tractor linkage

The **Robin 820** is the single row handpushed model. Its large diameter front wheel and adjustable height handles make it easy for one person to push.

Driven by a rear cage wheel

4 spacings per seedbelt

Adjustable bout marker

