

TEW MX MULTI-SEED™ **VEGETABLE SEED PLANTER**

The TEW Multi-Seed planters are built around a time tested design for both seeding & fertilizer applications. This style planter has always been known as the pumpkin/squash planter, but can also plant other seeds like corn, peas, beans, sunflower and other large type seeds accurately. The units come with four spacing gears and 3 common seed plates. Multi-Rom units can be mounted as close as 12" apart. All of the TEW MX Multi-Seed planter parts will interchange with Cole's



12mx planters

TEW MX MULTI-SEED MODEL PLANTER LIST PRICE \$ 895.00

**CURRENT SALE
PRICE \$ CALL**

- * Accurately plants all large seed type crops *
- * Plants seeds & places fertilizer simultaneously *
- * Accurately places fertilizer at a rate of 35 lbs. to 650 lbs. per acre *
- * Rugged cast iron & steel construction for years of durability *
- * Deep-V seed opener promotes fast germination, emergence, & uniform stands *
- * Split-Rim concave cast iron press wheel firms seed bed, but leaves *
zone directly over seedbeds
- * Scraper keeps press wheel free from debris build-up *
- * Opener floats independently of press wheel, and provides constant *
planting & metering on most terrains
- * Slide-gate controls fertilizer application rate with a simple wing nut adjustment *
- * Set seed depth with simple adjustment handle *
- * Change seed plates by simply removing a wing nut *

CALL TOLL FREE FOR MORE INFORMATION 1-800-380-5839

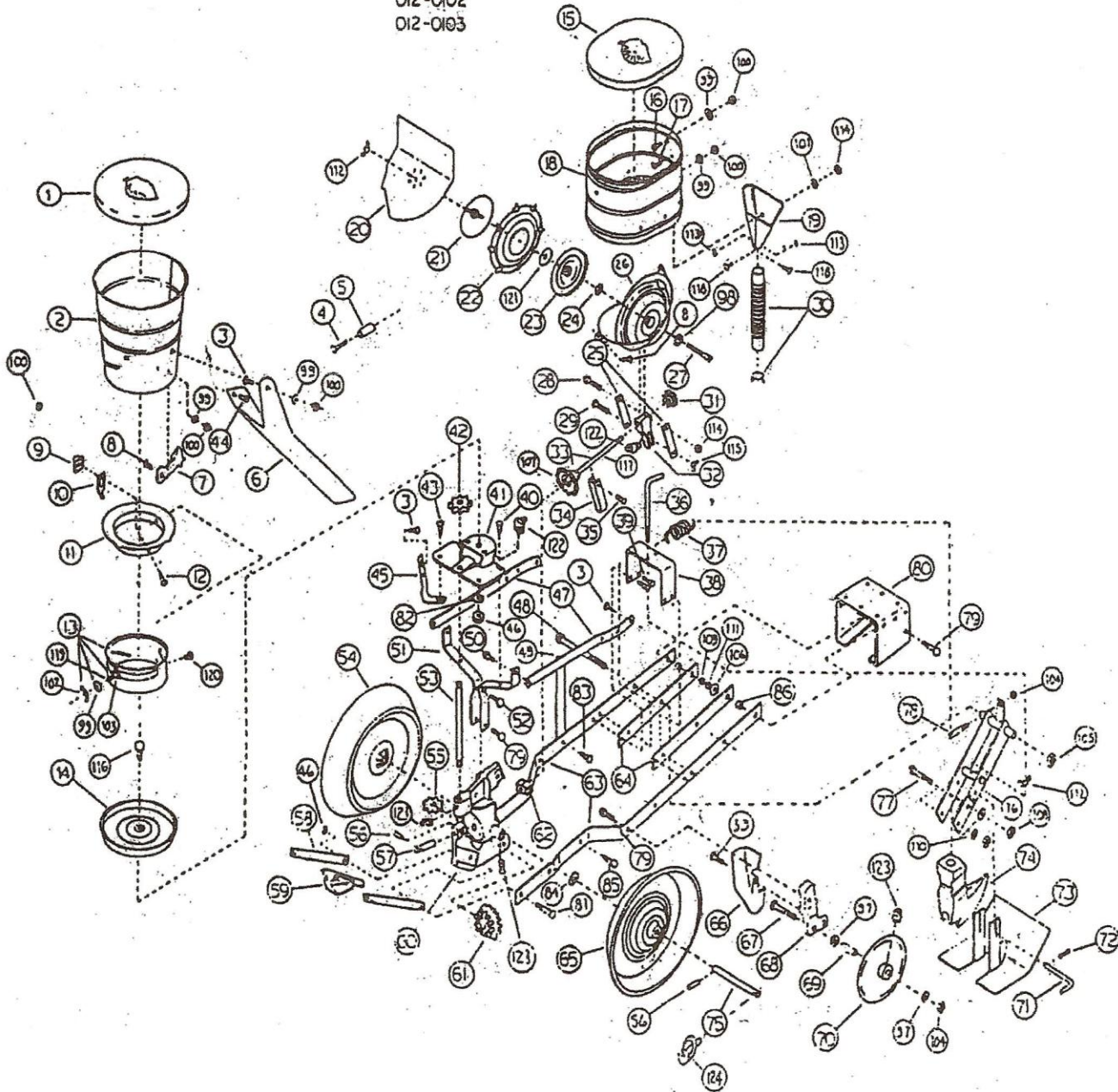
TEW MANUFACTURING CORPORATION

PO BOX 87, PENFIELD, NY 14526

TEL: 585-586-6120 - FAX 585-586-6083 E MAIL tewmfg@aol.com

HH-LP Planter Assembly

012-0102
012-0103



TEW MX PARTS LIST & LIST PRICES

DIAGRAM	COLE	TEW	2014	LIST
NUMBER	PART #	PART #	ITEM DESCRIPTION	PRICE
		HH-LP	PLANTER LARGE SEED TEW MX MULTI-SEEDER	\$895.00
1	P20-909	HH-08-61	FERTILIZER HOPPER LID (PLASTIC)	\$22.00
2	P30-593	HH-08-18	FERTILIZER CAN RIVETED	\$30.00
3	001-2549-5	GB794-88A	BOLT, CRG, 1/4-20NC X 5/8" (M6X15)	\$0.00
4	001-2558	GB794-88A	BOLT CRG 1/4-20NCX2 1/2" (M6X75)	\$0.00
5	P20-235	HH-08-28	HOPPER SPACER	\$2.00
6	P0S-35	HH-08-38	FERTILIZER SPOUT	\$15.00
7	P0A-50	HH-08-54	OUTSIDE FERTILIZER SCRAPER CASTING	\$5.00
8	001-2986	GB68-85	SCREW, MACH. FLAT HEAD 1/4-20NC X 3/4" (M6X20)	\$0.00
9	P00-52	HH-08-55	SHIELD, SCRAPE ORDER BNS-34/HH-08-17 BELOW	N/A
10	P0A-51	HH-08-57	SCRAPE, INSIDE FERTILIZER ORDER BNS-34/HH-08-17 BELOW	N/A
11	P00-57	HH-08-19	RING, FERTILIZER ORDER BNS-34/HH-08-17 BELOW	N/A
12	001-2991	GB68-85	SCREW, MACH. FLAT HEAD 1/4-20NC X 1 1/2" (M6X35)	\$0.00
13	B0S-37	HH-08-16	ASSEMBLY, CUT-OFF BAND ORDER BNS-34/HH-08-17 BELOW	N/A
14	P00-246	HH-08-6	FERTILIZER PLATE	\$25.00
15	B21-025	HH-08-62	SEED HOPPER LID	\$22.00
16	001-2985	GB820-86	SCREW, MACH FLAT HEAD 1/4-20NCX5/8" (M6X20)	\$0.00
17	001-2980	GB5783-86	SCREW, MACH FLAT HEAD 1/4-20NCX3/4" (?M8X15?)	\$0.00
18	B30-592	HH-08-47	CAN, SEED HOPPER ORDER B30-602 BELOW	N/A
19	P46-689	HH-08-41	SPOUT, SEED ORDER B30-602 BELOW	N/A
20	P20-927	HH-08-59	SEED PARTITION	\$15.00
21	P20-926	HH-08-60	SEED PLATE CAP ORDER W/ GB/T35-88/ 001-2075-B BOLT	\$15.00
23	P00-187	HH-08-01	UNDER SEED PLATE GEAR	\$15.00
24	001-0140	HH-08-72	NUT, 3/8" PAL.	\$3.00
25	P30-342	HH-08-42	BOTTOM STEEL	\$2.00
26	P00-8189	HH-08-40	BOTTOM, HOPPER ORDER B30-602 BELOW	N/A
27	001-2075-B	GB8-88	SCREW, SQ. HEAD 3/8"-16X3 1/2" FULL THD. (M10X90)	\$2.00
28	001-2037	GB5782-86	SCREW, CAP HH 5/16-18NCX1 1/2" (M8X40)	\$0.00
29	001-2576	GB794-88A	BOLT, CRG. 5/16-18 X 1 1/2" (M8X35)	\$0.00
30	P21-104	HH-08-39	RUBBER SEED SPOUT W/WIRE INCLUDES HH-08-24	\$15.00
31	P0G-8	HH-08-4	GEAR 8T	\$9.00
31	P0G-10	HH-08-48	GEAR 10T	\$11.00
31	P0G-12	HH-08-49	GEAR 12T	\$12.00
31	P0G-14	HH-08-50	GEAR 14T	\$15.00
32	P00-206	HH-08-10	BEARING UPPER	\$10.00
33	PCB-45	HH-08-31/08	DRIVE ASSY. W/DRIVE SHAFT # 117 & W/GEAR # 107	\$25.00
34	P0C-43	HH-08-11	AXLE STOP	\$3.00
35	001-2553	GB794-88A	BOLT, CRG 1/4-20NC X 1 1/4" (M6X30)	\$0.00
36	P21-132A	HH-08-56	DEPTH ADJUSTING ROD	\$5.00
37	P21-108	HH-08-23	SPRING	\$11.00
38	P21-114	HH-08-70	ADJUSTING BRACKET	\$13.00
39	001-2598	GB794-88A	BOLT, CRG 3/8-16NCX 1 1/4" (M10X30)	\$0.00
40	001-2575	GB794-88A	BOLT CRG. 5/15-18NCX 1 1/4" (M8X35)	\$0.00
41	P20-512	HH-08-9	SADDLE	\$24.00
42	P0B-255	HH-08-5	UPPER DRIVE GEAR	\$10.00
43	001-2574-S	GB794-88A	BOLT, CRG. 5/16-18NC X 1" SHORT SHOULDER (M8X25)	\$0.00
44	001-2002	GB794-88A	SCREW, CAP HH 1/4-20NC X 1/2" (M6X15)	\$0.00
45	P0S-257	HH-08-14	BRACE	\$15.00
46	001-0055	GB6170-86	LOCKNUT, HEX 3/8" (M10)	\$0.00

DIAGRAM	COLE	TEW	2014	LIST
NUMBER	PART #	PART #	ITEM DESCRIPTION	PRICE
47	P0C-179	HH-08-46	HOPPER BRACE	\$9.00
48	001-2163	GB5782-86	SCREW CAP HH 5/8-11NCX 7" (M16X180)	\$0.00
49	PCL-178	HH-08-44	LEFT BRACE	\$6.00
49	PCR-178	HH-08-45	RIGHT BRACE	\$6.00
50	001-2033	GB5783-86	SCREW, CAP HH 5/16-18 X 3/4" (M8X20)	\$0.00
51	P20-324	HH-08-15	LEG	\$8.00
52	001-2035	GB5783-86	SCREW CAP HH 5/16-18 X 1" (M8X20)	\$0.00
53	P20-713A	HH-08-25	DRIVE SHAFT 5/8	\$7.00
54	P00-186B-G	HH-08-20	WHEEL GEAR SIDE HALF	\$75.00
55	P20-712	HH-08-03	LOWER DRIVE GEAR	\$10.00
56	001-3433	GB879-86	ROLL PIN 1/4 X 1 1/2" (6X38)	\$1.00
57	P20-322	HH-08-13	DRIVE GEAR AXLE	\$4.00
58	P20-630	HH-08-66	SCRAPER ARM	\$4.00
59	P20-720	HH-08-58	SCRAPE, WHEEL SCRAPER	\$8.00
60	P20-320	HH-08-7	MAIN SUPPORT	\$68.00
61	P0A-253	HH-08-02	DRIVE GEAR	\$14.00
62	P0A-214	HH-08-12	LOWER BEARING	\$6.00
63	P21-112	HH-08-64	PLANTER BEAM	\$32.00
64	P21-113	HH-08-67	BACK-UP BEAM	\$10.00
65	P00-186B-P	HH-08-21	WHEEL PLAIN SIDE HALF	\$60.00
66	P21-174	HH-08-69	SIDE PLACER SPOUT	\$30.00
67	001-2651	GB794-88A	BOLT, CRG. 1/2-13NCX 3 1/4" (M12X75)	\$0.00
68	P21-175	HH-08-36	SIDE PLACER ATTACHING BRACKET	\$12.00
69	P-20-705	HH-08-26	SIDE PLACER BUSHING FOR DISC	\$7.00
70	P20-697	HH-08-22	FERTILIZER SIDE PLACER DISC	\$15.00
71	P21-134	HH-08-35	PIN	\$2.50
72	P20-277	HH-08-34	HAIR PIN #16 (1/8) WIRE	\$2.00
73	P21-109	HH-08-33	SKID PLATE	\$50.00
74	P21-131	HH-08-32	FOOT OPENER	\$36.00
75	P0S-99	HH-08-68	WHEEL AXLE 3/4	\$12.00
76	P21-115	HH-08-65	ARM SUPPORT	\$40.00
77	001-2043	GB5782-86	SCREW, CAP HH 5/16-18NC X 3" (M8X75)	\$0.00
78	P21-120	HH-08-27	ADJUSTING ROD 1/2	\$3.00
79	001-2067	GB5782-86	SCREW, CAP HH 3/8-16NC X 1 1/2" (M10X40)	\$0.00
80	P21-121	HH-08-37	ATTACHING BRACKET	\$50.00
81	001-2600	GB794-88A	BOLT, CRG. 3/8-16NC X 1 3/4" (M10X40)	\$0.00
82	001-1067	GB96-85	WASHER, FLAT SPECIAL (10)	\$0.00
83	001-2597	GB794-88A	BOLT, CRG, 3/8-16NC X 1 (M10X20)	\$0.00
84	001-1046	HH-08-71	WASHER 1 7/8 X 15/16 X 1/16TH	\$2.00
85	001-2065	GB5783-86	SCREW CAP HH 3/8-16NC X 1" (M10X25)	\$0.00
86	P-21-133	HH-08-63	BUSHING 45/64 X 13/32 X 17/32TH	\$2.00
97	001-1005	GB95-85	WASHER, FLAT 1/2 (12)	\$0.00
98	P30-450	HH-08-43	O RING 9/16 X 3/8 X 3/32TH. (9.5X1.8)	N/A
99	001-1001	GB96-85	WASHER 1/4" ZP USS STD. WROUGHT (6)	\$0.00
100	001-0005	GB6170-86	NUT, 1/4-20 HEX (M6)	\$0.00
101	001-1002	GB95-85	WASHER, FLAT 5/16" USS STD. WROUGHT (8)	\$0.00
102	001-0100	GB62-86	WING NUT 1/4-20 (M6)	\$1.00
103	001-0005	GB6170-86	NUT, 1/4-20 HEX (M6)	\$0.00
104	001-0009	GB6170-86	NUT, HEX 1/2-13 (M12)	\$0.00
105	001-0057	GB6170-86	LOCKNUT, 5/8-11NC (M16)	\$0.00
106	001-1003	GB95-85	WASHER, FLAT 3/8 (10)	\$0.00
107	P00-220	HH-08-08	DRIVE SHAFT GEAR	\$12.00
108	001-0006	GB6170-86	NUT, 5/15-18NC HEX (M8)	\$0.00

DIAGRAM	COLE	TEW	2014		LIST
NUMBER	PART #	PART #	ITEM DESCRIPTION		PRICE
109	001-0007	GB6170-86	NUT, 3/8-16NC HEX (M10)		\$0.00
110	001-1251	GB861.2-87	WASHER, LOCK 5/16 (8)		\$0.00
111	001-1252	GB861.2-87	WASHER, LOCK 3/8 (10)		\$0.00
112	001-0103	GB62-88	WING NUT 3/8-16NC (M10)		\$1.00
113	001-0004	GB6170-86	NUT, HEX 10-24NC (M5)		\$0.00
114	001-0061	GB6170-86	LOCKNUT, 5/16-18NC (M8)		\$0.00
115	001-0101	GB62-86	WING NUT 5/16 (M8)		\$1.50
116	001-2066	GB5782-86	SCREW, CAP HH 3/8-16NC X 1 1/4" (M10X35)		\$0.00
117	P20-644	HH-08-31	HOPPER DRIVE SHAFT		\$10.00
118	001-3096	GB65-85	SCREW MACH. RD. HD. 10-24NC X 1/2 (M5X15)		\$0.00
119	001-2552-S	GB794-88A	BOLT, CRG. 1/4-20NC X 1 (M6X25)		\$0.00
120	001-3486	GB873-86	RIVET, 1/4 X 1/2 (6X15)		\$0.00
121	001-1309	HH-08-43	SPECIAL FENDER WASHER 1 1/2 X 12/32 X 24GA.		\$0.50
122	003-8520	GB1152-89	GREASE FITTING 65 deg. 1/4" DRIVE (M6)		N/A
124	001-3727-A	HH-08-29	LYNCH PIN		\$6.00
124	001-3727-B	HH-08-30	LYNCH PIN		\$1.00
<u>COMPLETE HOPPER ASSEMBLIES</u>					
	B30-602	B30-602	SEED HOPPER ASSY. COMPLETE INCL.# 18,19,24,26,27		\$150.00
	BNS-34	HH-08-17	FERTILIZER HOPPER ASSY, COMPLETE INCL.#2,9,10,11,12,13		\$150.00
<u>MOUNTS, HITCHES, TOOL BARS & GAGE WHEELS</u>					
	B46-664A	HH08-88	3 POINT HITCH CAT 1, 12MX, LP BOLT ON		\$100.00
	B46-676	HH-676	GAUGE WHEEL, 12MX LP BOLT ON UNIT		\$125.00
	B46-670	HH08-100/101	HITCH 2 1/2"CORNER MOUNTED BAR FOR 12MX		\$25.00
	B46-679	HH08-129	80" TOOL BAR & A-FRAME 2 1/2" CORNER CAT 1		\$300.00
	B46-680	HH08-130	144" TOOL BAR & A-FRAME 2 1/2" CORNER CAT 1		\$400.00
<u>SEED PLATES</u>					
22	P30-433	HH08-53	SEED PLATE 42 CELL SOYBEANS, FIELD PEAS, S SNAP BEANS		\$20.00
22	P30-434	HH08-51	SEED PLATE 16 CELL CANE, OKRA, C S BEATS, ASPARA.		\$20.00
22	P0X-607	HH08-607	SEED PLATE 18 CELL LARGE ROUND CORN		\$20.00
22	P0X-367	HH08-52	SEED PLATE 12 CELL MED. FLAT CORN,		\$20.00
22	P0X-613	HH08-613	SEED PLATE 18 CELL MED. FLAT CORN		\$20.00
22	P0X-519	HH08-519	SEED PLATE 12 CELL MED. ROUND CORN		\$20.00
22	P0X-551	HH08-551	SEED PLATE 12 CELL EXTRA SMALL FLAT CORN		\$20.00
22	P0X-554	HH08-554	SEED PLATE 12 CELL SMALL FLAT CORN		\$20.00
22	P0X-343	HH08-343	SEED PLATE 40 CELL CANE, OKRA, C S BEATS, ASPARA.		\$20.00
22	P0X-454	HH08-454	SEED PLATE 21 CELL SMALL PEANUTS		\$20.00
22	P0X-500	HH08-500	SEED PLATE 12 CELL COTTON 3-4 PER HILL ACID DELINTED		\$20.00
22	P0X-355	HH08-355	SEED PLATE 2 CELL PUMPKIN, SQUASH, WATERMELON		\$20.00
22	P0X-362	HH08-362	SEED PLATE 6 CELL CANTALOUPE, CUCUMBER 2-3 PER HILL		\$20.00
22	P0X-350	HH08-350	SEED PLATE 36 CELL L SNAP BEANS, FIELD PEAS		\$20.00
22	P0X-340	HH08-340	SEED PLATE 32 CELL SMALL LIMA BEANS		\$20.00
22			SET OF 11 DIFFERENT SEED PLATES NOT INCLUDED W/UNIT		\$180.00