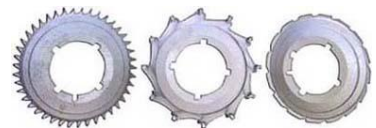


TEW MX MULTI-SEED™ **VEGETABLE SEED PLANTER**

The TEW MX Multi-Seed planters are built around a time tested design for both seeding & fertilizer applications. This style planter has always been known as the pumpkin/squash planter, but can also plant other seeds like corn, peas, beans, sunflower and other large type seeds accurately. The units come with four spacing gears and 3 common seed plates. Multi-Row units can be mounted as close as 12" apart. All of the TEW MX Multi-Seed planter parts will interchange with Cole's 12mx planters



TEW MX MULTI-SEED MODEL PLANTER LIST PRICE \$ 995.00

**CURRENT SALE
PRICE \$ 895.00**

- * Accurately plants all large seed type crops *
- * Plants seeds & places fertilizer simultaneously *
- * Accurately places fertilizer at a rate of 35 lbs. to 650 lbs. per acre *
- * Rugged cast iron & steel construction for years of durability *
- * Deep-V seed opener promotes fast germination, emergence, & uniform stands *
- * Split-Rim concave cast iron press wheel firms seed bed, but leaves *
zone directly over seedbeds
- * Scraper keeps press wheel free from debris build-up *
- * Opener floats independently of press wheel, and provides constant *
planting & metering on most terrains
- * Slide-gate controls fertilizer application rate with a simple wing nut adjustment *
- * Set seed depth with simple adjustment handle *
- * Change seed plates by simply removing a wing nut *

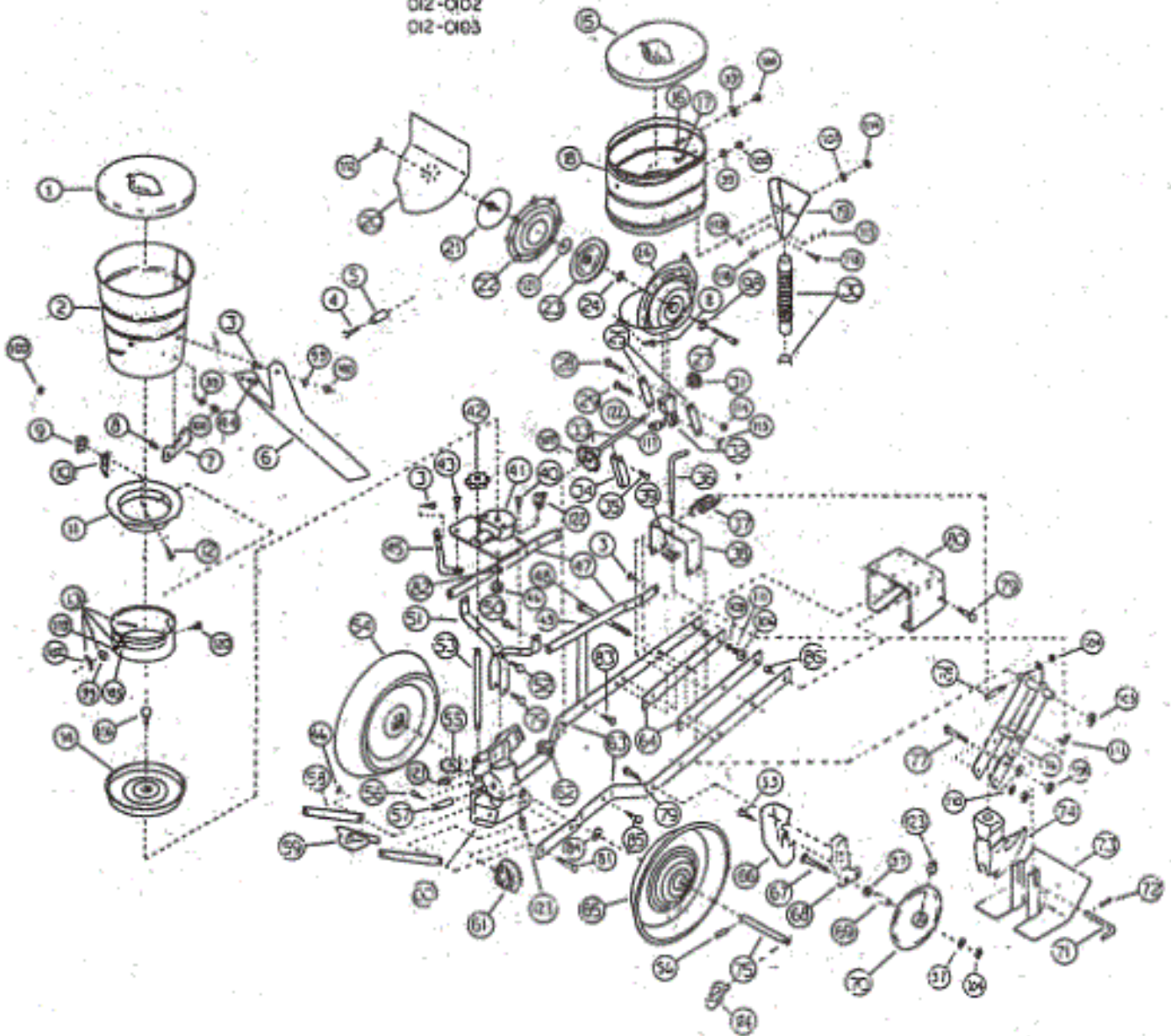
CALL TOLL FREE FOR MORE INFORMATION 1-800-380-5839

TEW MANUFACTURING CORPORATION
PO BOX 87, PENFIELD, NY 14526

TEL: 585-586-6120 - FAX 585-586-6083 E MAIL info@tewmfg.com

HH-LP Planter Assembly

012-0102
012-0103



TEW MX PARTS LIST & LIST PRICES

2015

| DIAGRAM NUMBER | COLE PART # | TEW PART # | ITEM DESCRIPTION | LIST PRICE |
|----------------|-------------|-------------|--|------------|
| | | HH-LP | PLANTER LARGE SEED TEW MX MULTI-SEEDER | \$995.00 |
| 1 | P20-909 | HH-08-61 | FERTILIZER HOPPER LID (PLASTIC) | \$22.00 |
| 2 | P30-593 | HH-08-18 | FERTILIZER CAN RIVETED | \$30.00 |
| 3 | 001-2549-5 | GB794-88A | BOLT, CRG, 1/4-20NC X 5/8" (M6X15) | \$0.00 |
| 4 | 001-2558 | GB794-88A | BOLT CRG 1/4-20NCX2 1/2" (M6X75) | \$0.00 |
| 5 | P20-235 | HH-08-28 | HOPPER SPACER | \$2.00 |
| 6 | P0S-35 | HH-08-38 | FERTILIZER SPOUT | \$15.00 |
| 7 | P0A-50 | HH-08-54 | OUTSIDE FERTILIZER SCRAPER CASTING | \$5.00 |
| 8 | 001-2986 | GB68-85 | SCREW, MACH. FLAT HEAD 1/4-20NC X 3/4" (M6X20) | \$0.00 |
| 9 | P00-52 | HH-08-55 | SHIELD, SCRAPE ORDER BNS-34/HH-08-17 BELOW SCRAPE, INSIDE FERTILIZER ORDER BNS-34/HH-08-17 | N/A |
| 10 | P0A-51 | HH-08-57 | BELOW | N/A |
| 11 | P00-57 | HH-08-19 | RING, FERTILIZER ORDER BNS-34/HH-08-17 BELOW | N/A |
| 12 | 001-2991 | GB68-85 | SCREW, MACH. FLAT HEAD 1/4-20NC X 1 1/2" (M6X35) ASSEMBLY, CUT-OFF BAND ORDER BNS-34/HH-08-17 | \$0.00 |
| 13 | B0S-37 | HH-08-16 | BELOW | N/A |
| 14 | P00-246 | HH-08-6 | FERTILIZER PLATE | \$40.00 |
| 15 | B21-025 | HH-08-62 | SEED HOPPER LID | \$22.00 |
| 16 | 001-2985 | GB820-86 | SCREW, MACH FLAT HEAD 1/4-20NCX5/8" (M6X20) | \$0.00 |
| 17 | 001-2980 | GB5783-86 | SCREW, MACH FLAT HEAD 1/4-20NCX3/4" (?M8X15?) | \$0.00 |
| 18 | B30-592 | HH-08-47 | CAN, SEED HOPPER ORDER B30-602 BELOW | N/A |
| 19 | P46-689 | HH-08-41 | SPOUT, SEED ORDER B30-602 BELOW | N/A |
| 20 | P20-927 | HH-08-59 | SEED PARTITION | \$15.00 |
| 21 | P20-926 | HH-08-60 | SEED PLATE CAP ORDER W/ GB/T35-88/ 001-2075-B BOLT | \$15.00 |
| 23 | P00-187 | HH-08-01 | UNDER SEED PLATE GEAR | \$15.00 |
| 24 | 001-0140 | HH-08-72 | NUT, 3/8" PAL. | \$3.00 |
| 25 | P30-342 | HH-08-42 | BOTTOM STEEL | \$2.00 |
| 26 | P00-8189 | HH-08-40 | BOTTOM, HOPPER ORDER B30-602 BELOW | N/A |
| 27 | 001-2075-B | GB8-88 | SCREW, SQ. HEAD 3/8"-16X3 1/2" FULL THD. (M10X90) | \$2.00 |
| 28 | 001-2037 | GB5782-86 | SCREW, CAP HH 5/16-18NCX1 1/2" (M8X40) | \$0.00 |
| 29 | 001-2576 | GB794-88A | BOLT, CRG. 5/16-18 X 1 1/2" (M8X35) | \$0.00 |
| 30 | P21-104 | HH-08-39 | RUBBER SEED SPOUT W/WIRE INCLUDES HH-08-24 | \$15.00 |
| 31 | P0G-8 | HH-08-4 | GEAR 8T | \$9.00 |
| 31 | P0G-10 | HH-08-48 | GEAR 10T | \$11.00 |
| 31 | P0G-12 | HH-08-49 | GEAR 12T | \$12.00 |
| 31 | P0G-14 | HH-08-50 | GEAR 14T | \$15.00 |
| 32 | P00-206 | HH-08-10 | BEARING UPPER | \$10.00 |
| 33 | PCB-45 | HH-08-31/08 | DRIVE ASSY. W/DRIVE SHAFT # 117 & W/GEAR # 107 | \$25.00 |
| 34 | P0C-43 | HH-08-11 | AXLE STOP | \$3.00 |
| 35 | 001-2553 | GB794-88A | BOLT, CRG 1/4-20NC X 1 1/4" (M6X30) | \$0.00 |
| 36 | P21-132A | HH-08-56 | DEPTH ADJUSTING ROD | \$5.00 |
| 37 | P21-108 | HH-08-23 | SPRING | \$11.00 |
| 38 | P21-114 | HH-08-70 | ADJUSTING BRACKET | \$13.00 |
| 39 | 001-2598 | GB794-88A | BOLT, CRG 3/8-16NCX 1 1/4" (M10X30) | \$0.00 |
| 40 | 001-2575 | GB794-88A | BOLT CRG. 5/15-18NCX 1 1/4" (M8X35) | \$0.00 |
| 41 | P20-512 | HH-08-9 | SADDLE | \$24.00 |
| 42 | P0B-255 | HH-08-5 | UPPER DRIVE GEAR | \$10.00 |
| 43 | 001-2574-S | GB794-88A | BOLT, CRG. 5/16-18NC X 1" SHORT SHOULDER (M8X25) | \$0.00 |
| 44 | 001-2002 | GB794-88A | SCREW, CAP HH 1/4-20NC X 1/2" (M6X15) | \$0.00 |
| 45 | P0S-257 | HH-08-14 | BRACE | \$15.00 |
| 46 | 001-0055 | GB6170-86 | LOCKNUT, HEX 3/8" (M10) | \$0.00 |

2015

| DIAGRAM NUMBER | COLE PART # | TEW PART # | ITEM DESCRIPTION | LIST PRICE |
|-------------------|----------------|---------------|--|---------------|
| 47 | P0C-179 | HH-08-46 | HOPPER BRACE | \$9.00 |
| 48 | 001-2163 | GB5782-86 | SCREW CAP HH 5/8-11NCX 7" (M16X180) | \$0.00 |
| 49 | PCL-178 | HH-08-44 | LEFT BRACE | \$6.00 |
| 49 | PCR-178 | HH-08-45 | RIGHT BRACE | \$6.00 |
| 50 | 001-2033 | GB5783-86 | SCREW, CAP HH 5/16-18 X 3/4" (M8X20) | \$0.00 |
| 51 | P20-324 | HH-08-15 | LEG | \$8.00 |
| 52 | 001-2035 | GB5783-86 | SCREW CAP HH 5/16-18 X 1" (M8X20) | \$0.00 |
| 53 | P20-713A | HH-08-25 | DRIVE SHAFT 5/8 | \$7.00 |
| 54 | P00-186B-G | HH-08-20 | WHEEL GEAR SIDE HALF | \$75.00 |
| 55 | P20-712 | HH-08-03 | LOWER DRIVE GEAR | \$10.00 |
| 56 | 001-3433 | GB879-86 | ROLL PIN 1/4 X 1 1/2" (6X38) | \$1.00 |
| 57 | P20-322 | HH-08-13 | DRIVE GEAR AXLE | \$4.00 |
| 58 | P20-630 | HH-08-66 | SCRAPER ARM | \$4.00 |
| 59 | P20-720 | HH-08-58 | SCRAPE, WHEEL SCRAPER | \$8.00 |
| 60 | P20-320 | HH-08-7 | MAIN SUPPORT | \$68.00 |
| 61 | P0A-253 | HH-08-02 | DRIVE GEAR | \$14.00 |
| 62 | P0A-214 | HH-08-12 | LOWER BEARING | \$6.00 |
| 63 | P21-112 | HH-08-64 | PLANTER BEAM | \$32.00 |
| 64 | P21-113 | HH-08-67 | BACK-UP BEAM | \$10.00 |
| 65 | P00-186B-P | HH-08-21 | WHEEL PLAIN SIDE HALF | \$60.00 |
| 66 | P21-174 | HH-08-69 | SIDE PLACER SPOUT | \$30.00 |
| 67 | 001-2651 | GB794-88A | BOLT, CRG. 1/2-13NCX 3 1/4" (M12X75) | \$0.00 |
| 68 | P21-175 | HH-08-36 | SIDE PLACER ATTACHING BRACKET | \$25.00 |
| 69 | P-20-705 | HH-08-26 | SIDE PLACER BUSHING FOR DISC | \$7.00 |
| 70 | P20-697 | HH-08-22 | FERTILIZER SIDE PLACER DISC | \$15.00 |
| 71 | P21-134 | HH-08-35 | PIN | \$2.50 |
| 72 | P20-277 | HH-08-34 | HAIR PIN #16 (1/8) WIRE | \$2.00 |
| 73 | P21-109 | HH-08-33 | SKID PLATE | \$50.00 |
| 74 | P21-131 | HH-08-32 | FOOT OPENER | \$36.00 |
| 75 | P0S-99 | HH-08-68 | WHEEL AXLE 3/4 | \$12.00 |
| 76 | P21-115 | HH-08-65 | ARM SUPPORT | \$40.00 |
| 77 | 001-2043 | GB5782-86 | SCREW, CAP HH 5/16-18NC X 3" (M8X75) | \$0.00 |
| 78 | P21-120 | HH-08-27 | ADJUSTING ROD 1/2 | \$3.00 |
| 79 | 001-2067 | GB5782-86 | SCREW, CAP HH 3/8-16NC X 1 1/2" (M10X40) | \$0.00 |
| 80 | P21-121 | HH-08-37 | ATTACHING BRACKET | \$50.00 |
| 81 | 001-2600 | GB794-88A | BOLT, CRG. 3/8-16NC X 1 3/4" (M10X40) | \$0.00 |
| 82 | 001-1067 | GB96-85 | WASHER, FLAT SPECIAL (10) | \$0.00 |
| 83 | 001-2597 | GB794-88A | BOLT, CRG, 3/8-16NC X 1 (M10X20) | \$0.00 |
| 84 | 001-1046 | HH-08-71 | WASHER 1 7/8 X 15/16 X 1/16TH | \$2.00 |
| 85 | 001-2065 | GB5783-86 | SCREW CAP HH 3/8-16NC X 1" (M10X25) | \$0.00 |
| 86 | P-21-133 | HH-08-63 | BUSHING 45/64 X 13/32 X 17/32TH | \$2.00 |
| 97 | 001-1005 | GB95-85 | WASHER, FLAT 1/2 (12) | \$0.00 |
| 98 | P30-450 | HH-08-43 | O RING 9/16 X 3/8 X 3/32TH. (9.5X1.8) | N/A |
| 99 | 001-1001 | GB96-85 | WASHER 1/4" ZP USS STD. WROUGHT (6) | \$0.00 |
| 100 | 001-0005 | GB6170-86 | NUT, 1/4-20 HEX (M6) | \$0.00 |
| 101 | 001-1002 | GB95-85 | WASHER, FLAT 5/16" USS STD. WROUGHT (8) | \$0.00 |
| 102 | 001-0100 | GB62-86 | WING NUT 1/4-20 (M6) | \$1.00 |
| 103 | 001-0005 | GB6170-86 | NUT, 1/4-20 HEX (M6) | \$0.00 |
| 104 | 001-0009 | GB6170-86 | NUT, HEX 1/2-13 (M12) | \$0.00 |
| 105 | 001-0057 | GB6170-86 | LOCKNUT, 5/8-11NC (M16) | \$0.00 |
| 106 | 001-1003 | GB95-85 | WASHER, FLAT 3/8 (10) | \$0.00 |
| 107 | P00-220 | HH-08-08 | DRIVE SHAFT GEAR | \$12.00 |
| 108 | 001-0006 | GB6170-86 | NUT, 5/15-18NC HEX (M8) | \$0.00 |

2015

| DIAGRAM NUMBER | COLE PART # | TEW PART # | ITEM DESCRIPTION | LIST PRICE |
|----------------|-------------|------------|---|------------|
| 109 | 001-0007 | GB6170-86 | NUT, 3/8-16NC HEX (M10) | \$0.00 |
| 110 | 001-1251 | GB861.2-87 | WASHER, LOCK 5/16 (8) | \$0.00 |
| 111 | 001-1252 | GB861.2-87 | WASHER, LOCK 3/8 (10) | \$0.00 |
| 112 | 001-0103 | GB62-88 | WING NUT 3/8-16NC (M10) | \$1.00 |
| 113 | 001-0004 | GB6170-86 | NUT, HEX 10-24NC (M5) | \$0.00 |
| 114 | 001-0061 | GB6170-86 | LOCKNUT, 5/16-18NC (M8) | \$0.00 |
| 115 | 001-0101 | GB62-86 | WING NUT 5/16 (M8) | \$1.50 |
| 116 | 001-2066 | GB5782-86 | SCREW, CAP HH 3/8-16NC X 1 1/4" (M10X35) | \$0.00 |
| 117 | P20-644 | HH-08-31 | HOPPER DRIVE SHAFT | \$10.00 |
| 118 | 001-3096 | GB65-85 | SCREW MACH. RD. HD. 10-24NC X 1/2 (M5X15) | \$0.00 |
| 119 | 001-2552-S | GB794-88A | BOLT, CRG. 1/4-20NC X 1 (M6X25) | \$0.00 |
| 120 | 001-3486 | GB873-86 | RIVET, 1/4 X 1/2 (6X15) | \$0.00 |
| 121 | 001-1309 | HH-08-43 | SPECIAL FENDER WASHER 1 1/2 X 12/32 X 24GA. | \$0.50 |
| 122 | 003-8520 | GB1152-89 | GREASE FITTING 65 deg. 1/4" DRIVE (M6) | N/A |
| 124 | 001-3727-A | HH-08-29 | LYNCH PIN | \$6.00 |
| 124 | 001-3727-B | HH-08-30 | LYNCH PIN | \$1.00 |

COMPLETE HOPPER ASSEMBLIES

| | | | |
|---------|----------|--|----------|
| B30-602 | B30-602 | SEED HOPPER ASSY. COMPLETE INCL.# 18,19,24,26,27 FERTILIZER HOPPER ASSY, COMPLETE | \$150.00 |
| BNS-34 | HH-08-17 | INCL.#2,9,10,11,12,13 | \$170.00 |

MOUNTS, HITCHES, TOOL BARS & GAGE WHEELS

| | | | |
|----------|--------------|---|----------|
| B46-664A | HH08-88 | 3 POINT HITCH CAT 1, 12MX, LP BOLT ON | \$125.00 |
| B46-676 | HH-676 | GAUGE WHEEL, 12MX LP BOLT ON UNIT | \$125.00 |
| B46-670 | HH08-100/101 | HITCH 2 1/2" CORNER MOUNTED BAR FOR 12MX | \$25.00 |
| B46-679 | HH08-129 | 80" TOOL BAR & A-FRAME 2 1/2" CORNER CAT 1 | \$300.00 |
| B46-680 | HH08-130 | 144" TOOL BAR & A-FRAME 2 1/2" CORNER CAT 1 | \$400.00 |

SEED PLATES

| | | | | |
|----|---------|----------|---|----------|
| 22 | P30-433 | HH08-53 | SEED PLATE 42 CELL SOYBEANS, FIELD PEAS, S SNAP BEANS | \$20.00 |
| 22 | P30-434 | HH08-51 | SEED PLATE 16 CELL CANE, OKRA, C S BEATS, ASPARA. | \$20.00 |
| 22 | P0X-607 | HH08-607 | SEED PLATE 18 CELL LARGE ROUND CORN | \$20.00 |
| 22 | P0X-367 | HH08-52 | SEED PLATE 12 CELL MED. FLAT CORN, | \$20.00 |
| 22 | P0X-613 | HH08-613 | SEED PLATE 18 CELL MED. FLAT CORN | \$20.00 |
| 22 | P0X-519 | HH08-519 | SEED PLATE 12 CELL MED. ROUND CORN | \$20.00 |
| 22 | P0X-551 | HH08-551 | SEED PLATE 12 CELL EXTRA SMALL FLAT CORN | \$20.00 |
| 22 | P0X-554 | HH08-554 | SEED PLATE 12 CELL SMALL FLAT CORN | \$20.00 |
| 22 | P0X-343 | HH08-343 | SEED PLATE 40 CELL CANE, OKRA, C S BEATS, ASPARA. | \$20.00 |
| 22 | P0X-454 | HH08-454 | SEED PLATE 21 CELL SMALL PEANUTS | \$20.00 |
| 22 | P0X-500 | HH08-500 | SEED PLATE 12 CELL COTTON 3-4 PER HILL ACID DELINTED | \$20.00 |
| 22 | P0X-355 | HH08-355 | SEED PLATE 2 CELL PUMPKIN, SQUASH, WATERMELON | \$20.00 |
| 22 | P0X-362 | HH08-362 | SEED PLATE 6 CELL CANTALOUPE, CUCUMBER 2-3 PER HILL | \$20.00 |
| 22 | P0X-350 | HH08-350 | SEED PLATE 36 CELL L SNAP BEANS, FIELD PEAS | \$20.00 |
| 22 | P0X-340 | HH08-340 | SEED PLATE 32 CELL SMALL LIMA BEANS | \$20.00 |
| 22 | | | SET OF 11 DIFFERENT SEED PLATES NOT INCLUDED W/UNIT | \$180.00 |